

## KIDS MENU £7.50

DRINK Apple juice, Orange juice or Milk

MAIN 10" PIZZA Margherita tomato sugo, fior di latte, basil

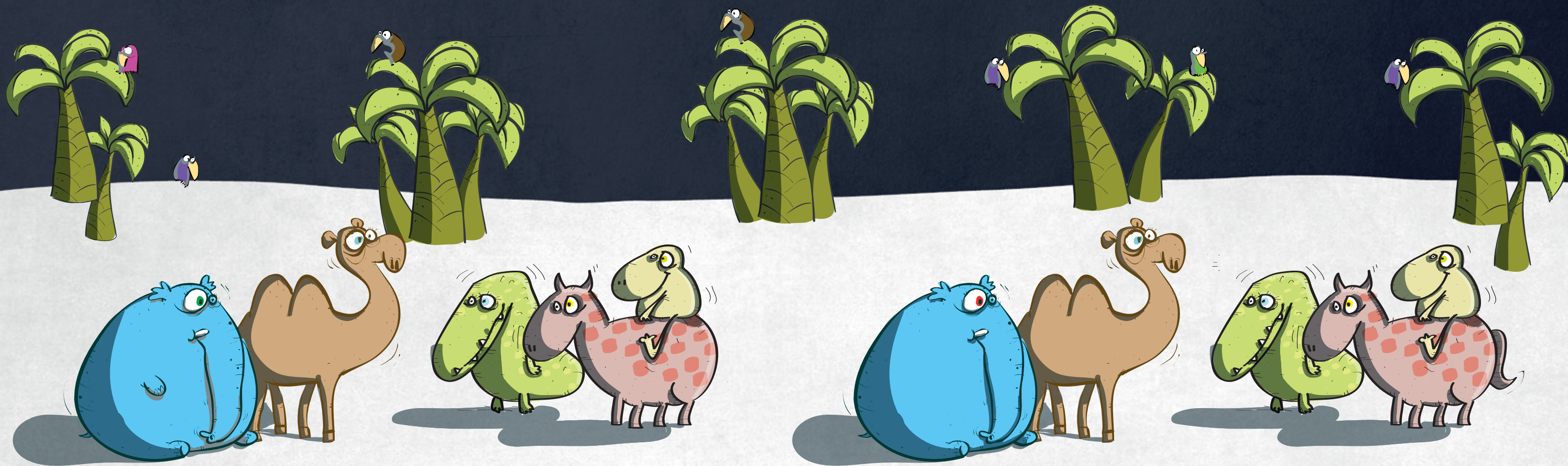
OR PENNE: Penne pasta cooked with either  
tomato sugo; cheesy sauce or butter sauce

ICE CREAM Vanilla, Chocolate or Strawberry

# POMO

PIZZERIA

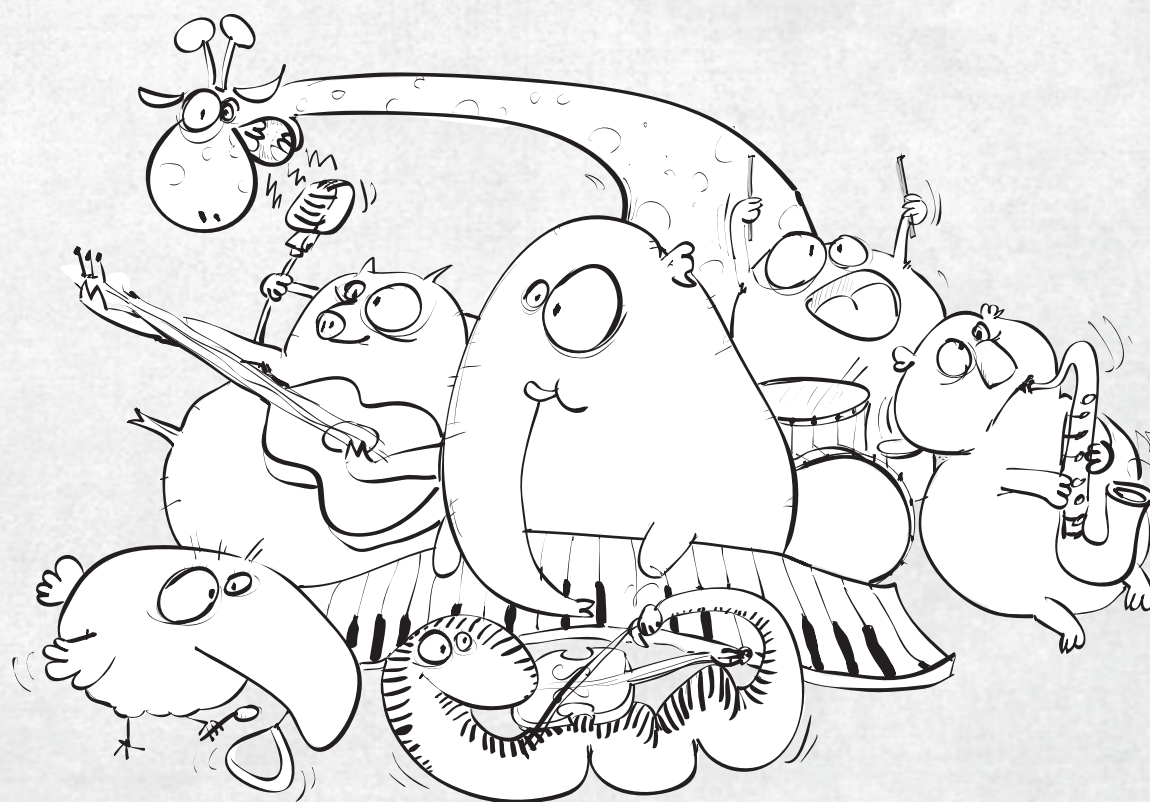




DOUBLE TROUBLE: THESE 2 GROUPS OF FRIENDS MAY LOOK THE SAME BUT THEY ARE ACTUALLY DIFFERENT! CAN YOU FIND ALL FIVE DIFFERENCES?



HELP THE GIRAFFE FIND HIS FRIEND PIGGY!



BLACK AND WHITE IS NO FUN. COLOUR THE ANIMAL BAND IN!

B	I	G	H	O	R	N	S	H	E	E	P	R	Q	M	K	X
R	O	G	I	A	N	T	P	A	N	D	A	J	B	M	C	T
R	G	Q	G	C	X	A	X	S	R	G	O	R	I	L	L	A
E	S	C	J	G	F	K	T	C	O	T	M	R	E	L	J	K
G	N	J	I	J	H	L	Z	U	N	U	H	E	T	Z	S	R
I	O	A	R	E	D	F	O	X	G	I	J	N	Q	I	G	E
T	W	O	I	X	N	Z	N	W	N	N	A	Q	S	N	E	E
L	L	V	L	U	F	Y	S	O	C	H	A	C	T	F	O	M
A	E	S	S	M	G	H	C	F	P	I	Z	R	F	P	O	C
G	O	W	I	L	D	E	B	E	E	S	T	A	O	J	R	G
N	P	G	M	J	R	J	L	R	A	K	R	C	D	P	A	P
E	A	E	P	O	L	E	T	N	A	I	I	V	R	Z	G	D
B	R	U	S	J	D	Q	S	Y	G	S	K	Q	H	A	N	G
Z	D	C	H	I	M	P	A	N	Z	E	E	V	E	K	A	I
S	U	M	A	T	O	P	O	P	P	I	H	V	I	K	K	U
R	A	E	B	R	A	L	O	P	M	A	N	D	R	I	L	L
H	N	O	I	L	N	A	C	I	R	F	A	O	Z	I	L	A

WORD SAFARI: CAN YOU SPOT ALL 20 ANIMALS?